

BECKENHAM PUBLIC HALL CURRENT PROVISION

Beckenham Public Hall is a grade-II listed Victorian building built in 1883 to the design of architect George Viges. It was designed in playful Arts and Crafts style, with a symmetrical façade of five bays and a central entrance.

The Hall is in Beckenham town centre, south of Harris Primary Academy Beckenham Green and St George's Church, and just north of Beckenham's high street, the A222.

Under its current lease with MyTime Active, the Hall is used as an events venue and hire space. It caters for wedding ceremonies and receptions, and has a regular timetable of activities and events throughout the week including children's activity, health and wellbeing, games and recreation, and church groups.

However, the Hall is not utilised to its capacity and while it is accessible to the general public, it is only open around the times of scheduled activities and classes. Additionally, there is no 'drop-in' provision, so while the general public can access the building when open, there is no driver for doing so.

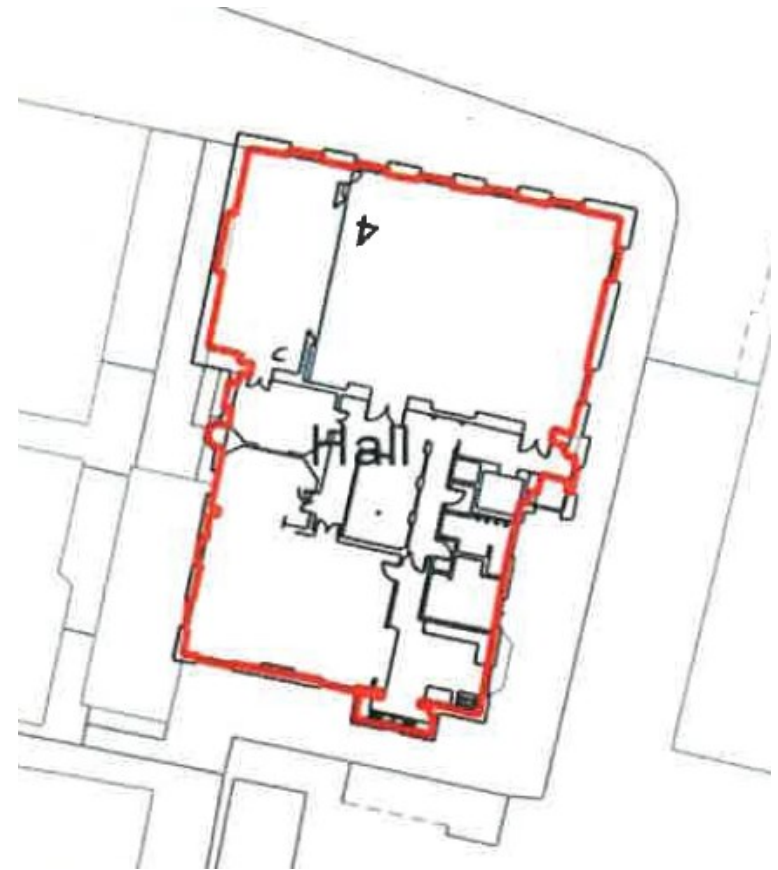


The Hall is split over four floors. The ground and first floors are generous and usable spaces. The visitor enters into a large foyer with a hall to the left, a reception and office area to the right, and grand staircase ahead leading to the first floor. There is also some back of house space including a lift.

Alongside a spacious landing, the first floor is home to two halls, one large with stage, and a second one with back of house kitchen facilities.



GROUND FLOOR



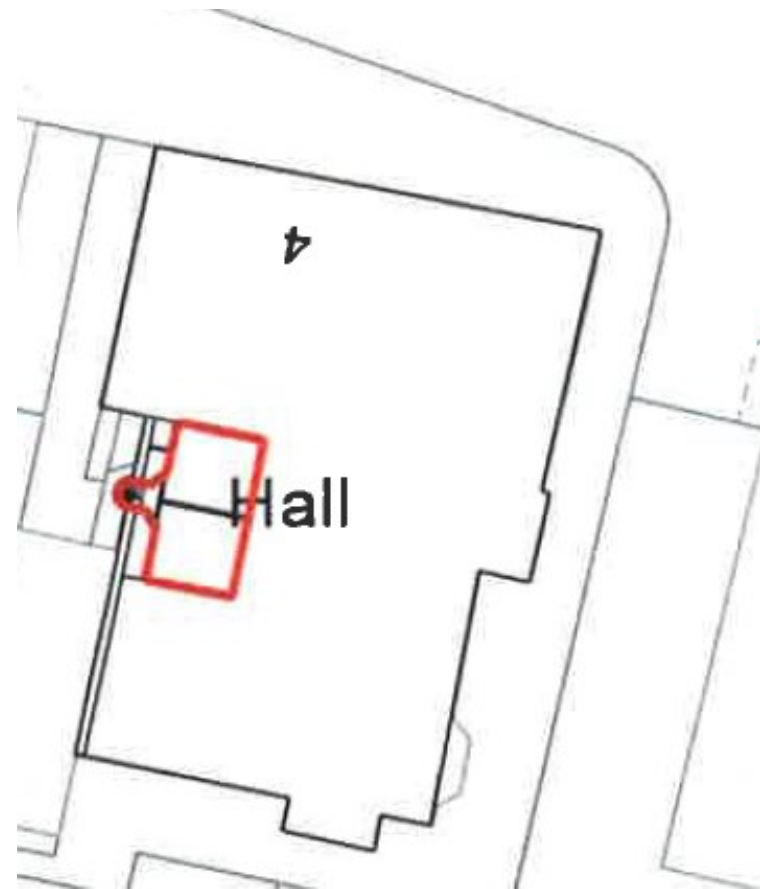
FIRST FLOOR

The basement is accessed through a hatch in the main entrance / foyer but is not publicly accessible.

The second floor is an attic space comprising two small rooms that could be utilised as office space. This would release the need for an office on the ground floor which could then be subsumed into public circulation. However, access to the second floor is currently through a narrow, winding staircase which would need to be addressed.



BASEMENT



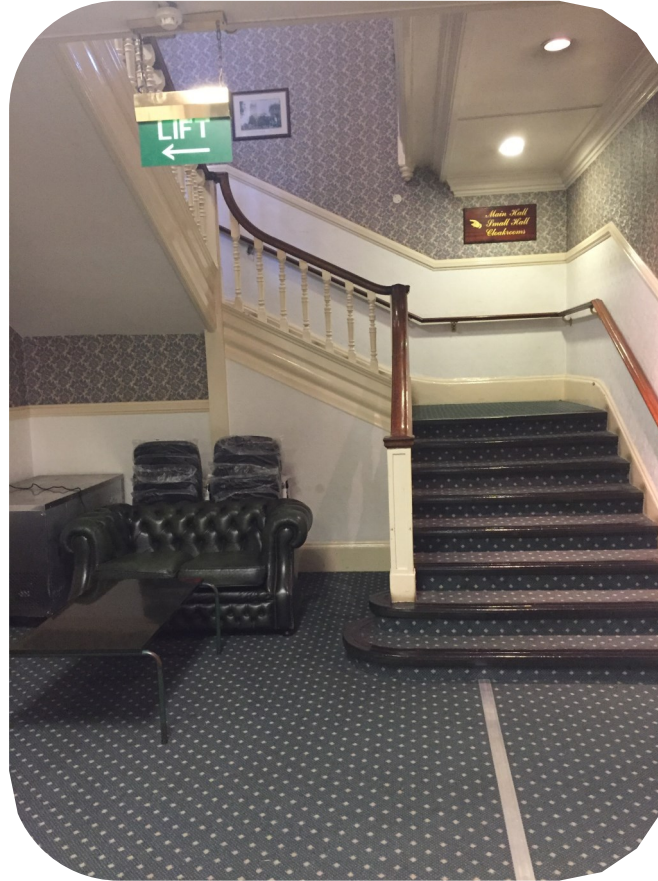
SECOND FLOOR

GROUND FLOOR

GROUND FLOOR HALL



ENTRANCE



RECEPTION



FIRST FLOOR

LARGE HALL



SMALL HALL



KITCHEN



BECKENHAM PUBLIC HALLS

FUTURE PROVISION

As a library 'plus', Beckenham Public Hall will become the town's flagship cultural venue, with a considerably enhanced offer.

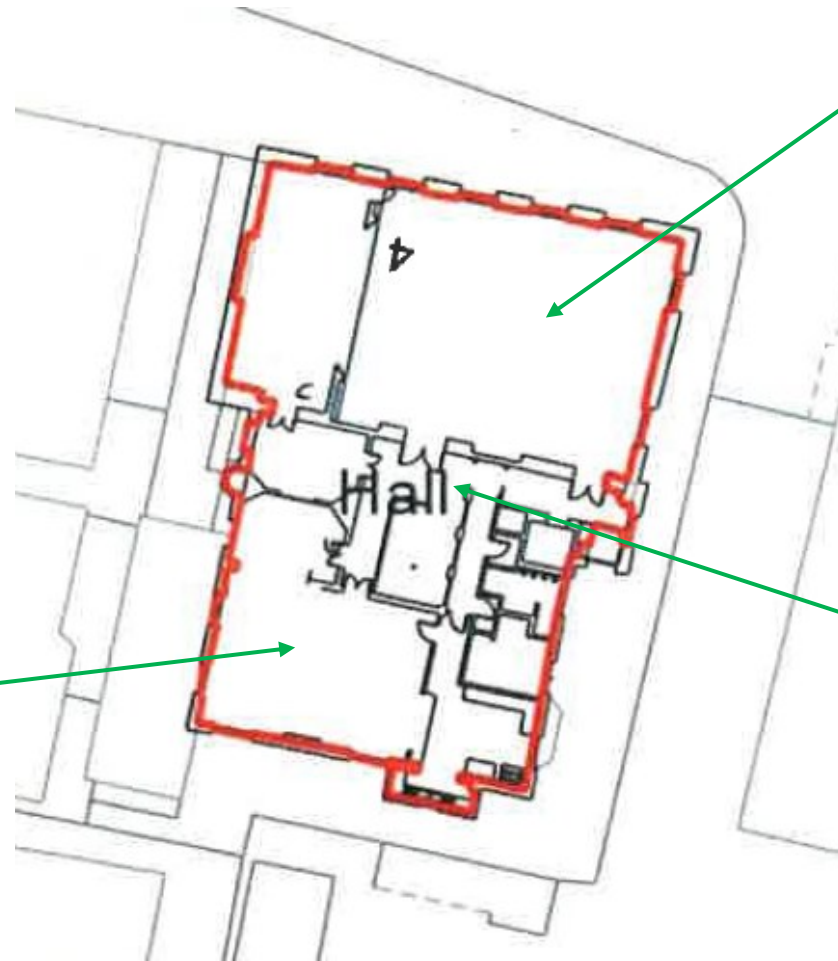
It will combine contemporary library facilities with exhibition space to tell the history of Beckenham, co-working and meeting facilities to cater for a more agile working environment, arts workshops, health and wellbeing classes, children's activities, and music and theatre performances.

The main entrance / foyer will be the hub of the library: a bright and open space with features that could include a reception desk, working spaces and relaxed seating. Walls in this space may be used for book and magazine display as well as exhibits, artwork and digital information boards.

The ground floor hall would be a dedicated children and young persons' library with fixed features that create an engaging and immersive learning environment.



BECKENHAM PUBLIC HALLS FUTURE USE



The large hall would be retained as a space for events and performances. It may include some library provision and exhibits but these would be auxiliary to its main function.

The small hall would be the main dedicated library space, incorporating the footprint of the current kitchen subject to the partition wall not being load bearing.

The circulation space of the landing should be maximised and utilised as library and exhibition space.

ENTRANCE / FOYER



Glass lobby doors will allow daylight to flood the entrance foyer and give a more obvious “open” feel to passers-by.

The new site has a larger footprint but more circulation space. All space should therefore be used efficiently to make the site comparable to the current library. The ground floor entrance is a wide corridor and can be well-utilised while retaining a clear through-fare.

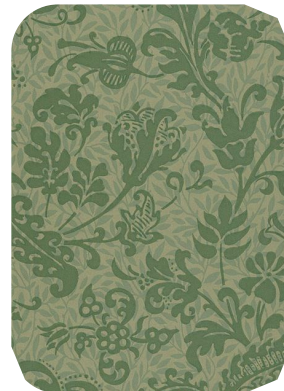
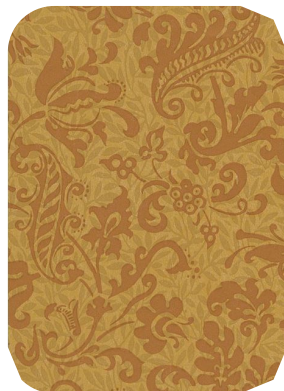
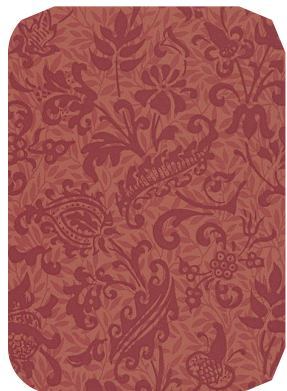
ENTRANCE / FOYER

Features in the entrance / foyer could include:

- Informal meeting spaces / tables
- Magazine / newspaper display
- Individual lounging
- Café / vending
- Wall displays for books / art
- Quick pick + display
- Private seating
- Wall shelving
- Digital news display.



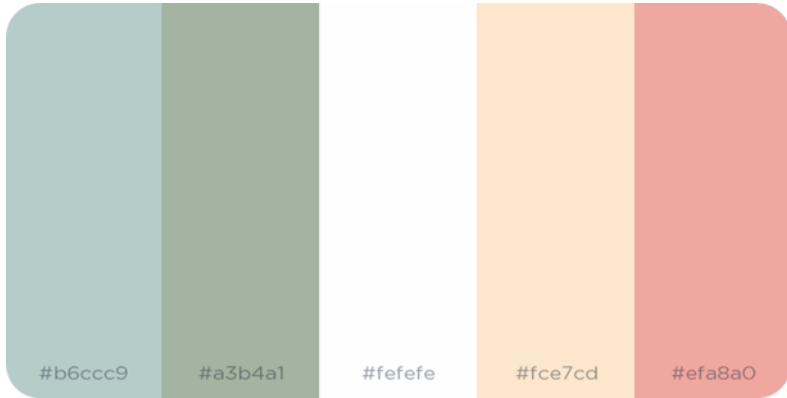
Colours should draw upon the building's heritage.



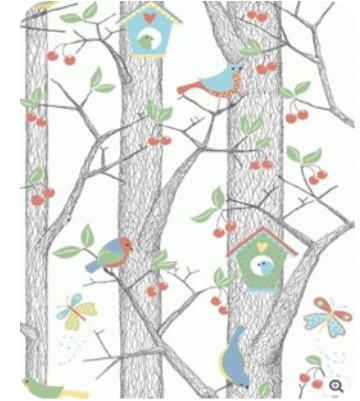
ENTRANCE / FOYER — INDICATIVE VISUAL



CHILDREN'S LIBRARY



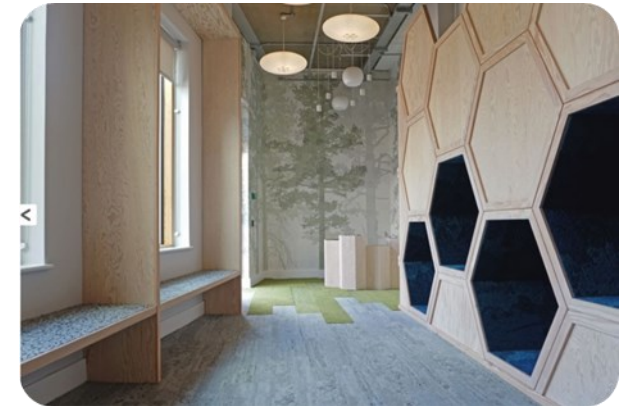
Vibrant but soft colour palette with a leaning towards nature-based / biophilic design.



Rounded edges, flexible and movable shelving, storage and seating.



Hide-away reading nooks built into corners / along walls to use space efficiently.



MAIN LIBRARY SPACES

All spaces should be flexible and moveable to maximise opportunity for secondary functions including events, activities and room hire.



Chairs with built-in tables create efficient work spaces, and upholstery creates an intimate and high end offer.



Shelving should be high end but flexible, with castors - preferably unseen. Hidden reading corners should be explored.



Exhibition showcases should be built into shelving units, enhancing the library's function and centre of culture in Beckenham.

MAIN LIBRARY SPACES



Co-working space with built in power sockets. Power supplies should be considered throughout library spaces.